

MSW485-2

Pedigree: MSQ070-1 x MSR156-7

Developers: Michigan State University

PVP: In progress

MORPHOLOGY

Plant: Medium size, semi-erect vine type

Tubers: Round tubers with lightly netted skin

AGRONOMICS

Maturity: Mid-season

Yield Potential (US#1) cwt/A*: 485 (328 - 731)

Specific Gravity*: 1.084 (1.064 - 1.097)

Seed Spacing: 10"

Dormancy: Similar to Snowden

Strengths: Resistant late blight, tolerance to common scab, high specific gravity

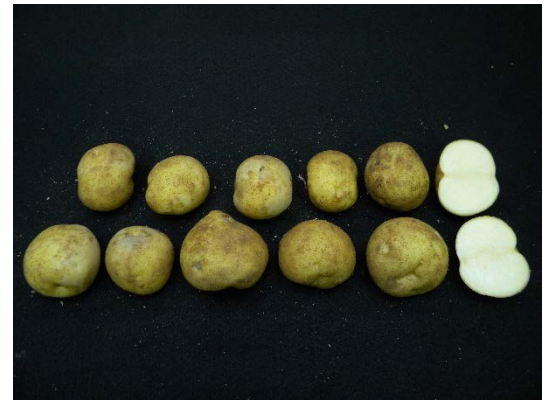
Weaknesses: Above average incidence of raw internal defects, late vine maturity

UTILIZATION

MSW485-2 has an above average yield potential under irrigated conditions, and is resistant to black spot bruising. It has an attractive tuber type and uniform, round tubers. MSW485-2 has deliverable chip quality from December to early April out of 50 °F storage, with a storage airflow 1.0-1.2 cfm/cwt. Growers should monitor and manage conditions that can cause internal defects, as this variety is susceptible to raw internal defects.



MICHIGAN STATE
UNIVERSITY



MSW485-2 tubers grown in 2017



Chips processed on March 19th, 2018 from 50°F

* Data reflects the mean with range in parenthesis from 33 trials in three years.

MSW485-2 Data Summary

Category	# Trials	Average	Range
US # 1 Yield (Cwt/A)	33	485	328 - 731
Total Yield (Cwt/A)	33	553	420 - 802
% US No. 1	33	87	69 - 97
% B Size ¹	33	11	3 - 29
% A Size ¹	33	83	64 - 90
% Oversize ¹	33	4	0 - 25
% Pickouts	33	2	0 - 5
Specific Gravity	33	1.084	1.064 - 1.097
SNAC Chip Color OTF ²	32	1.3	1.0 - 2.0
Common Scab ³	33	0.7	0.0 - 1.8
Vine Vigor ⁴	32	2.9	1.0 - 4.0
Vine Maturity ⁵	31	3.9	2.5 - 5.0
% Hollow Heart	33	7	0 - 60
% Vascular Discoloration	33	9	0 - 70
% Internal Brown Spot	33	5	0 - 40
% Brown Center	33	2	0 - 20

¹B size < 1 7/8", A size 1 7/8" - 3 1/4", Oversize > 3 1/4"

²Out of the Field Rating from 1 (excellent) to 5 (very poor), values < 2 are acceptable

³Common Scab Rating Scale from 0 (no scab) to 5 (severe scab)

⁴Vine Vigor Rating Scale from 1 (slow emergence) to 5 (early emergence)

⁵Vine Maturity Rating Scale from 1 (dead vines) to 5 (vigourous, flowering vines)

This variety was evaluated between 2016 and 2018.